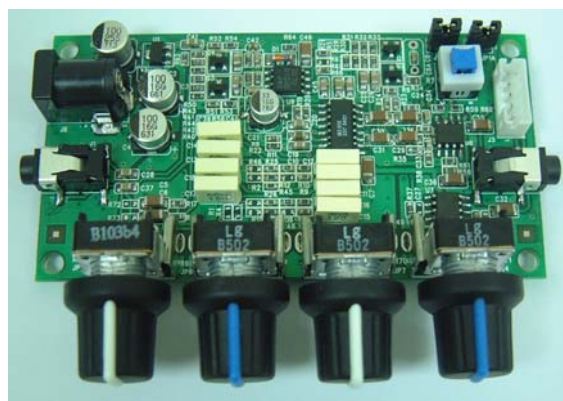


UNIQUE AUDIO TECHNOLOGY

DRD makes it possible to reproduce super low bass lively, improve audio products' **dynamic range** substantially and makes speaker to create **pure, natural, powerful** and **lively** acoustics. You can experience **True3D sound** easily.



FEATURES

- ▶ **DRD True3D Sound** algorithm include
- ▶ Built in crossover circuit with non-notch frequency response
- ▶ Wide dynamic sound range extended - up to 23.5dB enhance at 20Hz
- ▶ Automatic control sound quality and sound enhancement
- ▶ Pull out speaker's maximum performance even at small volume
- ▶ Prevent sound distortion when it is loud volume and over enhanced low tones
- ▶ Adjustable crossover frequency
- ▶ Surround sound on/off function
- ▶ 2-ch / 2.1-ch output can be selected
- ▶ Total volume control
- ▶ Total True3D Sound enhancement level control
- ▶ Tone balance control
- ▶ Woofer gain control
- ▶ Analog signal Input/Output
- ▶ Size: 85mm*45mm

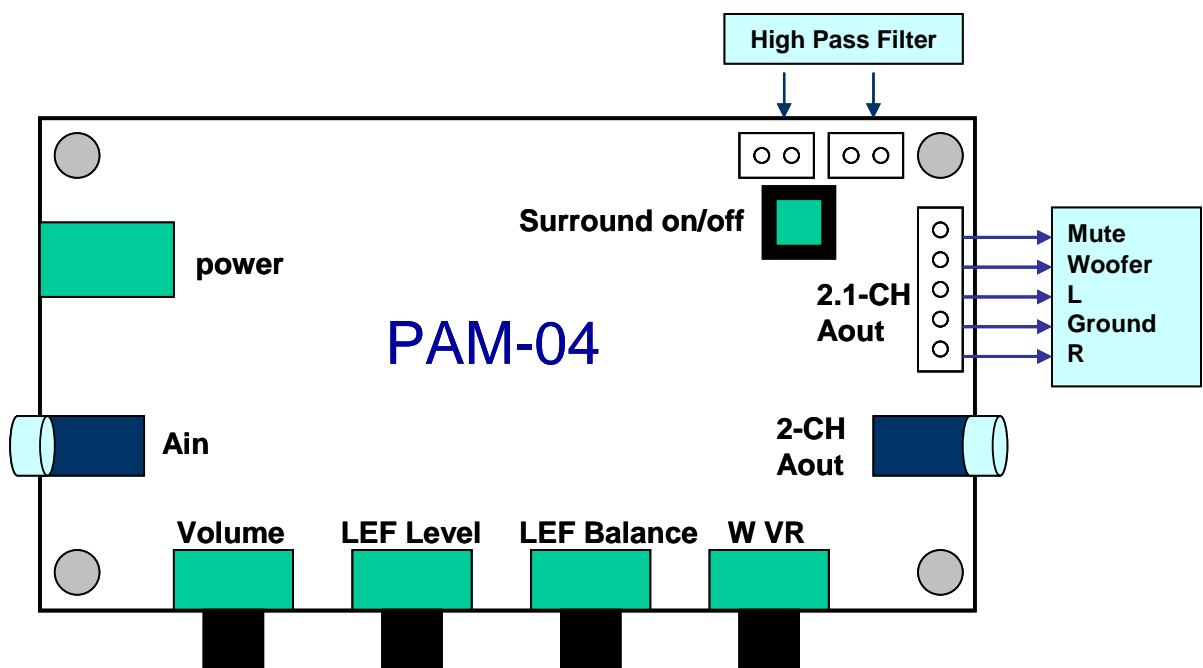
ELECTRONIC SPECIFICATIONS

Power Consumption	26 mA
Supply voltage	12~24V
Max Input Level	0.7 Vrms
Max Output Level	0.7 Vrms
S/N Ratio (A weighted)	90dB

APPLICATIONS

- ▶ Car Audio
- ▶ Home Theater
- ▶ TV
- ▶ PC Speaker
- ▶ Sound Docking
- ▶ Power Amplifier
- ▶ Portable Audio
- ▶ DVD
- ▶ Gaming Speaker

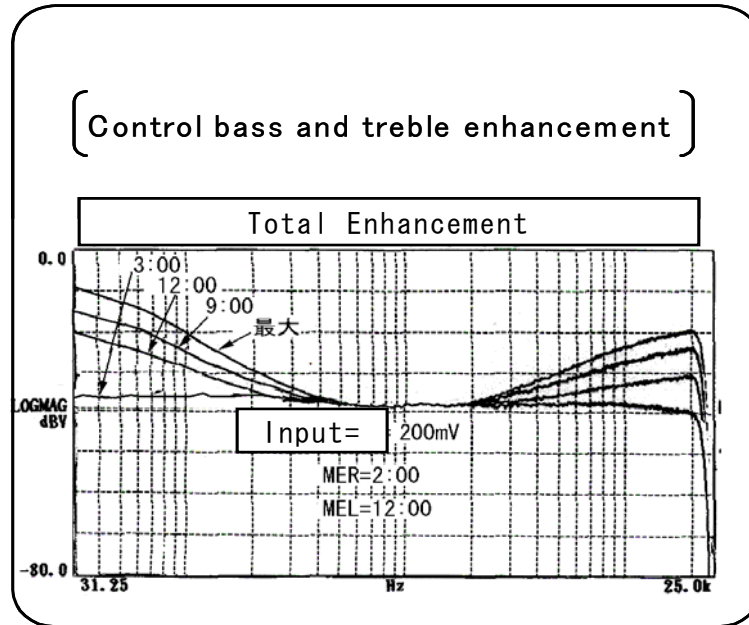
CONNECT INSTRUCTION



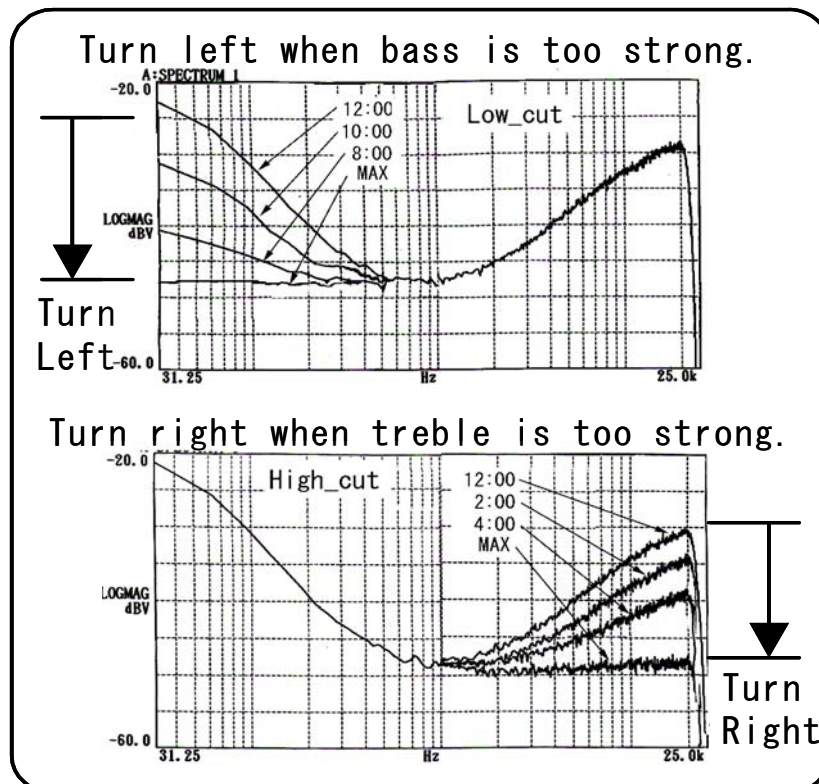
ITEM	Description
LEF Level	True3D Sound (Dynamic range enhancement) level control
LEF Balance	Tone balance control
W VR	Woofer gain level control
Power	12Vdc, inner-Positive / out-Negative
High Pass Filter	When jumper was connected – no HPF at satellite speaker When jumper was disconnected – HPF function was on (for 2.1-ch system)

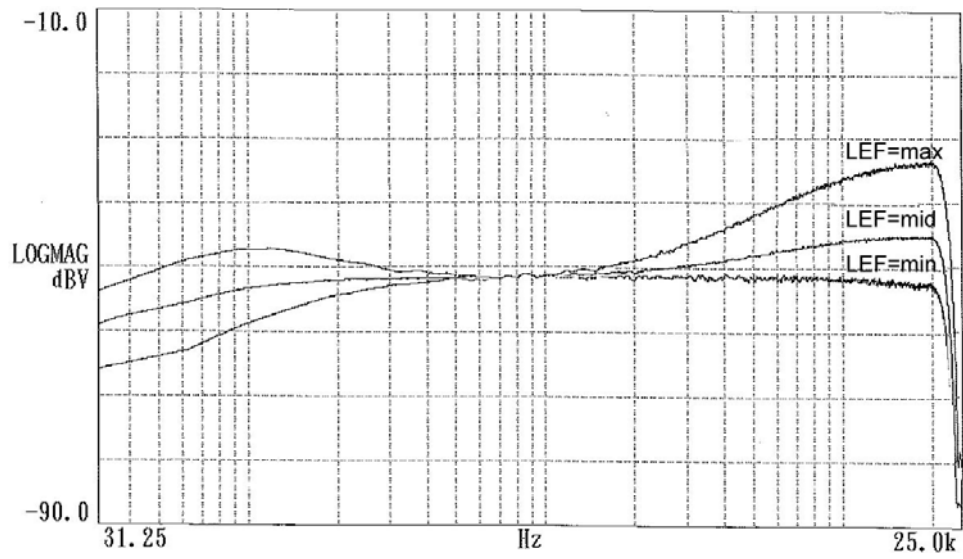
GAIN / FREQUENCY CHARACTERISTIC

LEF Level

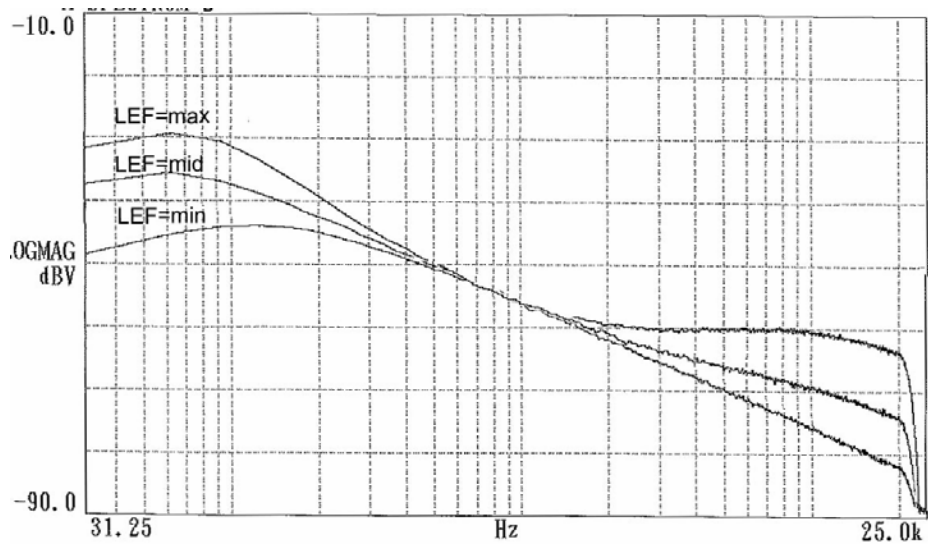


LEF Balance





Characteristic for satellite speaker



Characteristic for woofer speaker